



### Installation Guidelines

#### Securing Wishbone Benches and Picnic Tables to Concrete Pads

#### Concrete Anchor Option

(June 2010)

1. Put the product in position on the concrete pad.

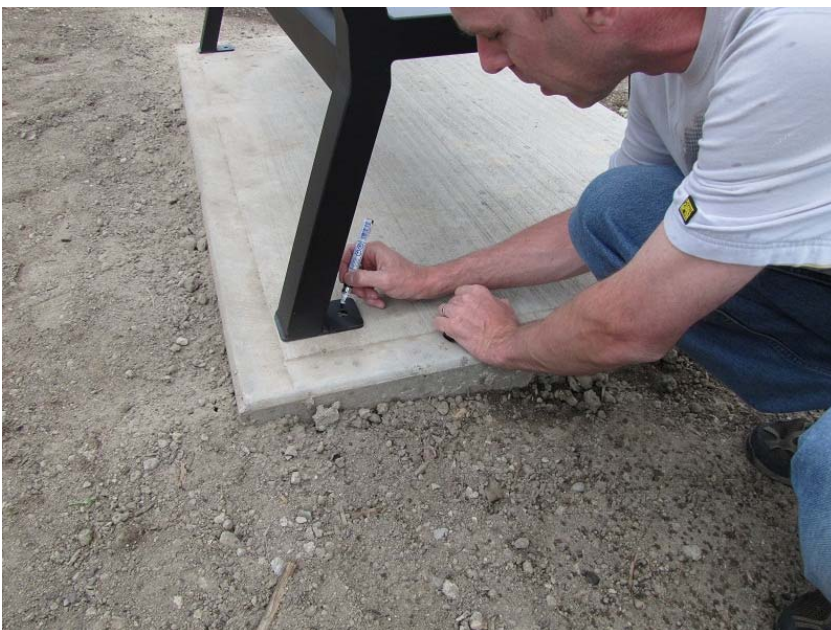


#### Required Tools and Materials

- ✓ Concrete hammer drill
- ✓ ½" concrete drill bit
- ✓ Hammer
- ✓ Air compressor
- ✓ Measuring tape
- ✓ 7/32" allen key
- ✓ Felt marker
- ✓ Silicone
- ✓ Paint pen

It is best to have 2 people to install a bench or table.

2. Mark the holes with a felt pen.



3. Remove the bench/table.
4. Set the depth or the drill bit to the length of the anchor.



5. Drill the holes to a depth of 1-5/8" (as suggested by the anchor manufacturer).



6. Blow out the holes to remove all the concrete dust and debris.



7. Insert concrete anchor.



8. Hammer the anchor with the supplied post to expand the base securing it to the concrete.



9. Position bench on concrete pad.



10. Secure bench to the anchor with bolt supplied.



11. Fill the top of the fastener with silicone – this will deter vandalism or removal of the bench should someone have the appropriate tool,



12. Paint the top of the fastener with a color to match the bench.



13. Take a few moments to enjoy the view and the comfort of the bench !!

