

Parker Fisherman's Chair

Model Number

PFC-24



Catch the Big One from The Fisherman's Chair! A community was looking to replace a very basic "dock chair" design with something more functional and durable and we came up with this sturdy, low maintenance model that simulates a traditional angler's or fisherman's chair found on piers or recreational and commercial fishing boats. The seat is high enough to sit comfortably and cast a line over railings or barriers on wharfs and quays. No need to actually get out the fishing gear; users will enjoy the comfort and visibility that the chair provides in addition to the novelty of the design. Great for photo ops when you reel 'em in! Custom heights can be created depending on the application.

Material Specifications

Marine Grade Aluminum Frame
Stainless Steel Hardware
Super Durable Powder Coating
100% Recycled Plastic Slats
Western Red Cedar
Accoya Modified Pine
Hardened Bamboo

Customized Solutions

Custom Powder Coating (Setup Charges May Apply)
Custom Seat Height
Optional Umbrella Holder on the Backrest
INST-1.5 Stainless Steel Bolt-Down Kit

Recycled Content

Recycled Content by Weight: 46%
100% Recyclable

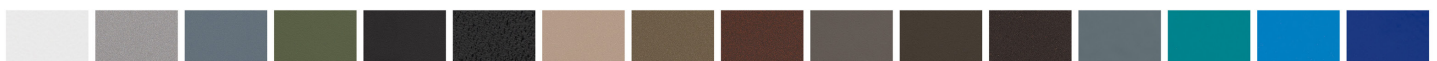
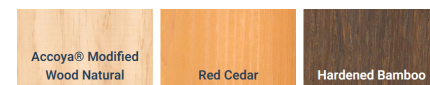
Product Dimensions

Total Height: 50 inches / 127 cm
Total Depth: 29 inches / 73 cm
Seat Height: 35 inches / 89 cm
Seat Depth: 14.5 inches / 37 cm
Length: 27 inches / 68 cm
Weight: 70 lbs / 32 kg

100% Recycled Plastic Lumber Colours



Unstained Natural Wood Alternatives



OVER 30 POWDER COATING COLOURS *Premium powder colours incur a surcharge per item

